



**The 46<sup>th</sup> Mayor's Cup**  
**June 3 & 4, 2023 at Lake Townsend**  
**Sailing Instructions (SIs)**

**1. Rules**

1.1. The regatta will be governed by the rules as defined in the Racing Rules of Sailing.

**2. Entries**

2.1. The event is open to boats with a recognized Portsmouth Handicap.

2.2. Eligible boats may enter the event by **Signing** up here or registering on June 3<sup>rd</sup> before 10:30 AM.

2.3 To be considered an entry in the event, a boat shall complete all registration requirements and pay all fees.

2.4. All participants, including crew, must check-in and sign the Lake Townsend Yacht Club Release Sheet prior to participation.

**3. Notices to Competitors**

3.1. Notices to competitors will be posted on the official notice board located on the club race shed.

**4. Changes to Sailing Instructions**

4.1. Changes to the Sailing Instructions will be posted immediately following the competitors meeting.

4.2. Oral changes to the Sailing Instructions may be made by the PRO on the water by raising Race Signal "L" and notifying and receiving verbal or visual acknowledgement from each boat that comes within hail.

**5. Signals Made Ashore**

5.1. Signals made ashore will be displayed on the Race Committee boat at dock or posted on the official notice board located on the club race shed.

5.2. When AP is displayed ashore, the warning signal will be made not less than 30 minutes after AP is lowered. This modifies Race Signal AP.

**6. Schedule**

6.1.

Saturday, June 3<sup>th</sup>

Competitors meeting 10:00

First Warning Signal 11:30

Sunday, June 4<sup>th</sup>

First Warning Signal 10:30

No warning signal after 14:30

**7. Racing Area**

7.1. The racing area will be located on Lake Townsend.

**8. Course and Marks**

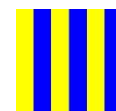
8.1. The course will be displayed from the race committee (RC) boat.

8.2. The diagrams and text in Attachment A show the courses, course designations, marks in order and rounding directions of each mark.

8.3. The starting line will be between an orange flag on the signal boat and an inflated orange sphere at the pin end. The finish line will be between a blue flag on the signal boat and an inflated orange sphere at the pin end. The finish line may be shortened.

8.4. Marks 1, 2, and 3 are orange truncated cones. The offset mark is a small yellow tetrahedron or orange cylinder.

8.5. The RC has the option to use a gate in place of the leeward mark. The signal boat shall fly the "G" flag if a gate is to be used.

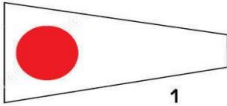




**The 46<sup>th</sup> Mayor's Cup**  
**June 3 & 4, 2023 at Lake Townsend**  
**Sailing Instructions (SIs)**

## 9. Starting System

9.1. Races will start under the Flags displaying class logo: Example: Flying Scot, Wayfarer, 420, Open Monohull - Numeral Pennant ONE; Open Multihull - Numeral Pennant TWO. If required, additional Class Flags will be announced at the Competitors' Meeting, and then posted on the official notice board.



9.2 The order of class starts is at the discretion of the PRO. Class starts may be combined.

## 10. Time Limit

- 10.1. The time limit for each race will be 60 minutes for the first boat of each class to finish.
- 10.2. If no boat in a class has rounded the windward mark 30 minutes after the starting signal, that class's race shall be abandoned.
- 10.3. Boats that fail to finish within 90 minutes of the starting signal will be scored DNF, without a hearing. This changes RRS 35, A5.1, and A5.2.
- 10.4. Race committee may finish in place boats who are still racing but not yet finished, provided their finish position can be determined in a reasonable manner.

## 11. Penalty System

11.1. RRS 44.1 is changed so that the Two-Turns Penalty is replaced by the One-Turn Penalty.

## 12. Protests

- 12.1. Boats intending to protest shall, if reasonably possible, notify the race committee boat at the finish line of the sail number(s) and class(es) of boat(s) being protested.
- 12.2. Protest forms are available at the notice board or from race committee.
- 12.3. Protests shall be delivered to Race Committee within 30 minutes after the race committee boat returns to shore.
- 12.4. Hearings will be held as soon as possible after racing on shore.

## 13. Scoring

- 13.1. Classes with four or more boats will be scored as one-design classes.
- 13.2. Open monohull and open multihull classes will be scored if more than four boats register for each class. If fewer than 4 monohulls and 4 multihulls register, one open class will be scored.
- 13.3. Handicap computations for open class(es) will be in accordance with the Portsmouth Yardstick using the Wind Dependent Handicap Factors.
- 13.4. Each race will be individually scored using low-point scoring.
- 13.5. One race is required to be completed to constitute a regatta.
- 13.6. A Boat's series score shall be the total of her race scores.

## 14. Safety

- 14.1. All boats shall comply with all local and state safety regulations, as well as class rules.
- 14.2. Prior to racing each day, a boat shall sail on starboard past the stern of the race committee boat and hail her sail number. (Discretionary Penalty)



**The 46<sup>th</sup> Mayor's Cup**  
**June 3 & 4, 2023 at Lake Townsend**  
**Sailing Instructions (SIs)**

14.3. A boat that has withdrawn from a race shall notify race committee as soon as reasonably possible. (DP)

**15. Disclaimer of Liability**

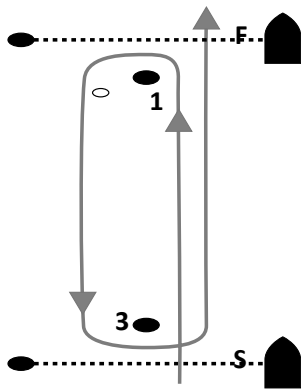
15.1. Competitors participate in the races at their own risk. See RRS 4, Decision to Race. The organizing authority will not accept any liability for material damage or personal injury or death sustained in conjunction with or prior to, during, or after the regatta.



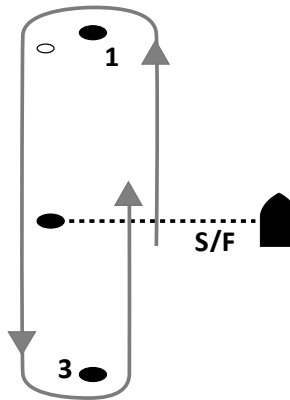
The 46<sup>th</sup> Mayor's Cup  
 June 3 & 4, 2023 at Lake Townsend  
 Sailing Instructions (SIs)

**Attachment A: Courses**

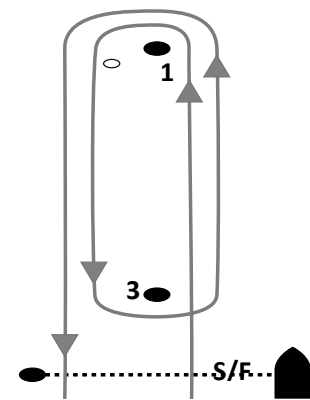
W  
 Windward Leeward



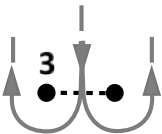
M  
 Modified Windward Leeward



WD  
 Windward Start/Downwind Finish



Leeward Gate Option



Any leeward mark can be replaced with a **Leeward Gate** in which case competitors must pass through the gate in the downwind direction and then round one of the two marks that form the gate, heading upwind outside one of the marks.

**W** indicates a windward-leeward course with a windward start and windward finish. This course includes an **offset mark (OM)** to port of the windward mark. **Start-1-OM-3-Finish**. If other than 1 lap, the number of laps will be displayed after the course abbreviation (e.g. **WL2** means a two-lap windward-leeward course), and the **1OM-3** will be repeated for each additional lap.

**M** indicates a modified windward-leeward course. This course includes an offset mark (OM) to port of the windward mark. **Start-1-OM-3-Finish**. If other than 1 lap, the number of laps will be displayed after the course abbreviation (e.g. **MWL2** means a two-lap modified windward leeward course), and the **1-OM-3** will be repeated for each additional lap.

**WD** indicates a windward-leeward course with a downwind finish. This course includes an offset mark (OM) to port of the windward mark. **Start-1OM-3-1-OM-Finish**. If other than 1 leeward mark rounding, the number of roundings will be displayed after the course abbreviation (e.g. **WD2** means that sailors will round the leeward mark twice before finishing the course with a downwind finish), and the **3-1-OM** will be repeated for each additional leeward mark rounding.