

Mayor's Cup September 26-27, 2020 Lake Townsend Yacht Club

Lake Townsend, North Carolina
36° 11.226' N, 079° 43.935' W

SAILING INSTRUCTIONS

1. RULES

1.1 The regatta will be governed by the rules as defined in The Racing Rules of Sailing (RRS).

1.2 If there is a conflict between the Notice of Race and the Sailing Instructions, the Sailing Instructions shall prevail. This changes RRS 63.7.

2. CHANGES TO SAILING INSTRUCTIONS

2.1 Changes to the Sailing Instructions will be posted on the Official Notice Board by 1000 hours Saturday and by 0900 hours on Sunday, except as described in 2.2. Any change to the schedule of races will be posted by 1900 hours on the day before it will take effect.

2.2 Oral changes to the Sailing Instructions may be made by Race Committee on the water. The Signal Boat will raise signal flag L and verbally notify each competitor who comes within hail.

3. SIGNALS MADE ASHORE

3.1 Signals made ashore will be displayed on the flagpole located at the Lake Townsend Marina.

3.2 When flag AP is displayed ashore, the warning signal will be made not less than 30 minutes after AP is lowered. This modifies race signal AP.

4. SCHEDULE OF RACES

4.1 A Competitors' Meeting will begin at 1900 hours on Friday via Zoom meeting online meeting. Credentials will be mailed to registered participants by 20:00 Thursday, September 24th.

4.2 Five races are scheduled, but more may be sailed at the discretion of the PRO. Flag A displayed, with no sound, while boats are finishing means "No more racing today". A minimum of one race must be completed to constitute a regatta. The warning signal for the first race scheduled each day is as follows:

Saturday - Warning signal for first race of the day at 1130 hours. Subsequent races to follow.

Sunday - Warning signal for first race of the day at 1030 hours. Subsequent races to follow. No warning signal will be made after 1430 hours on Sunday.

5. CLASS FLAGS

Class flags will be the class insignia of the Flying Scot and Wayfarer classes. Numeral Pennant 1 will be the class flag of the Open Monohull and Multihull classes. Numeral pennant 2 will be the class flag for the 420 class. If required, additional class flags will be posted on the notice board and announced at the Competitors' Meeting. The order of class starts is at the discretion of the PRO. Class starts may be combined.

6. RACING AREA

The racing area will be on Lake Townsend.

7. THE COURSES

7.1 The diagrams on page 4 show the courses.

7.2 No later than the warning signal, the Race Committee Signal Boat will display the approximate compass bearing of the first leg.

8. MARKS

8.1 Marks 1, 2 and 3 will be orange truncated cones.

8.2 Offset marks will be an orange sphere.

8.3 The starting and finishing marks will be orange spheres.

8.4 Gate marks will be yellow spheres.

8.5 A new mark, as provided in Sailing Instruction 10, will be a yellow cylinder.

9. THE START

The starting line will be between an orange flag displayed on the Race Committee Signal Boat at the starboard end and an orange sphere at the port end.

10. CHANGE OF THE NEXT LEG OF THE COURSE

To change the next leg of the course, Race Committee will lay a new mark and remove the original mark as soon as practicable. When in a subsequent change of course a new mark is replaced, it will be replaced with the original mark. There will be no offset mark for new or subsequent marks.

11. THE FINISH

The finishing line will be between an orange flag displayed on a Race Committee boat and an orange sphere.

12. PENALTY SYSTEM

12.1 For multihull classes, RRS 44.1 is changed so that the Two Turns Penalty is replaced by the One-Turn Penalty.

12.2 For monohull classes, a boat may take a One-turn penalty when she may have broken a rule of Part 2 or Rule 31 while racing. However, when she may have broken a rule of Part 2 while in the zone around a mark other than a starting mark, her penalty shall be a Two-Turns Penalty. This changes RRS 44.1.

13. TIME LIMITS

13.1 If no boat in a class has rounded the windward mark 30 minutes after the starting signal, that class's race is abandoned.

13.2 The time limit is 90 minutes for the first boat of a class to sail the course in accordance with rule 28.1 and finish.

13.3 Boats finishing more than 30 minutes after the first boat in her class that sails the course and finishes, will be scored "Time Limit Expired" (TLE) and will be scored two points more than the last boat that finishes, without a hearing. This changes rules 35, 63.1, A4.1, A4.2, A5, and A11.

13.4 Time limits for the Open handicap classes will be based on each boat type separately.

14. PROTESTS AND REQUESTS FOR REDRESS

14.1 Protest forms will be available at the Official Notice Board and can be delivered to the Principal Race Officer.

14.2 The protest time limit is 30 minutes after the Race Committee Signal Boat docks and signals with one sound signal.

14.3 Notices will be posted on the Official Notice Board within 5 minutes after the protest time limit to inform competitors of hearings in which they are parties or named as witnesses.

15. SCORING

15.1 No scores will be excluded. This changes Rule A2.1. Four or more boats of the same one-design will constitute a class. Open monohull and open multihull classes will be scored if more than 4 boats register for each class. If fewer than 4 monohulls and 4 multihulls register, one open class will be scored.

15.2 Handicap computations will be made using the US Sailing Portsmouth Handicap system with wind adjustments for the open monohull and open multihull classes and the Bryan Cup.

16. SAFETY REGULATIONS

16.1 Prior to the first warning signal each day, competitors shall check in by sailing on starboard tack past the stern of the Signal Boat, hailing Race Committee with their sail number until acknowledged by the Race Committee. (DP)

16.2 A boat that retires from a race shall notify a Race Committee boat as soon as possible. (DP)

17. PRIZES

17.1 The number of trophies awarded to a class will be based on the number of boats in that class that start at least one race.

17.2 The **Mayor's Cup** is awarded to the winner of the one design class with the highest number of boats that start at least one race.

17.3 The **Bryan Cup** is awarded to the winner with the highest average number of boats beaten per race in its start (excluding the Mayor's Cup class).

17.4 Results will be posted on the LTYC Website. Prizes will be mailed to the winners in the absence of an Awards ceremony.

18. CLEAN REGATTA

18.1 Protecting our local waters is very important to this regatta and we ask for your help in minimizing waste.

18.2 On shore separate your trash and place recyclables in the appropriate recycling containers which will be available near the docks and at the shelter.

18.3 We are working to eliminate single use plastics. Utilize reusable water bottles by bringing your own to the regatta. We will NOT be providing any provisions this year due to COVID 19.

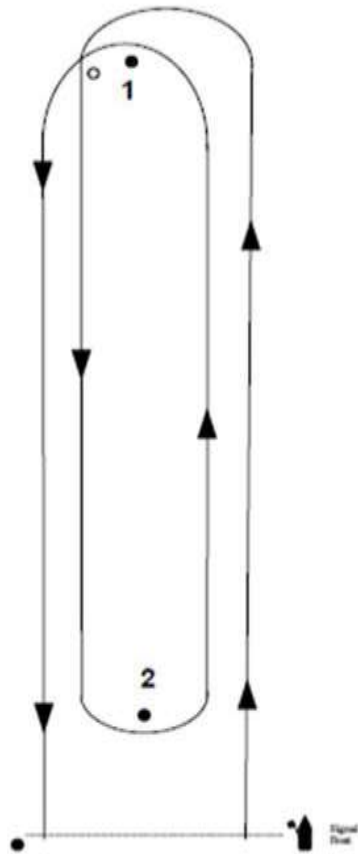
18.5 Please help us to leave Lake Townsend Park in better shape than when we arrived by picking up any trash that you find both along the shoreline and while on the water.

19. COVID 19 RESTRICTIONS:

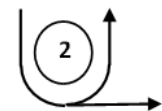
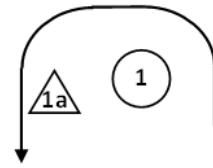
Refer to NOR, LTYC and City of Greensboro P&R websites, and North Carolina (<https://www.nc.gov/covid19>) for requirements pertaining to preventing the spread of Covid 19. Please wear a mask in the presence of others and practice social distancing. (DP)

20. DISCLAIMER OF LIABILITY

Competitors participate in the regatta entirely at their own risk. See RRS 4, Decision to Race. The organizing authority will not accept any liability for material damage or personal injury or death sustained in conjunction with or prior to, during, or after the regatta.



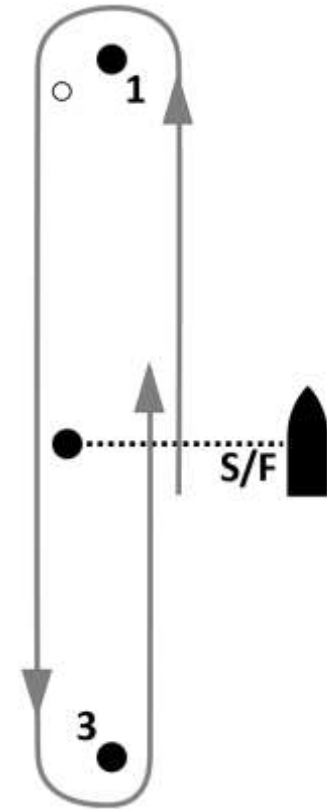
Course WD1 (shown above)
S-1-2-1-F
Course WD2
S-1-2-1-2-1-F



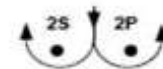
finish



Course WDR S - 1 - 1a - 2 - F
Course WDR2 S - 1 - 1a - 2 - 1 - 1a - 2 - F



Course W1 (shown above)
S-1-3-F
Course W2
S-1-3-1-3-F



Leeward Mark Gate Option:

If employed, boats must pass between the two marks of the gate in the direction from the windward mark.